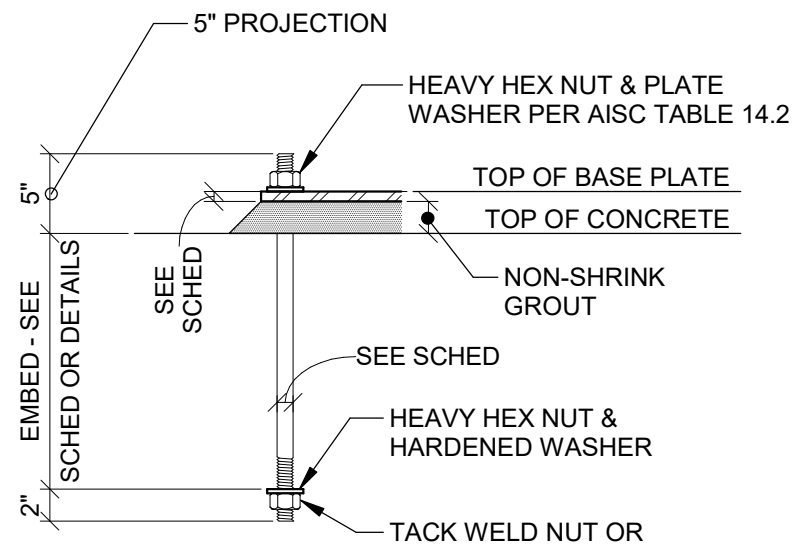


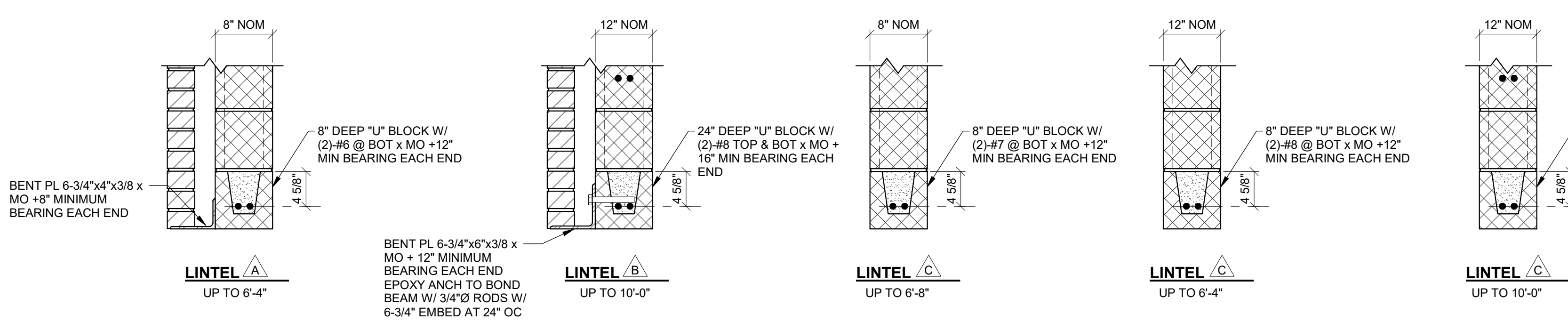
**TYPICAL FRAMING DETAIL @
CURB MOUNTED AIR HANDLING UNITS**

BASE PLATE SCHEDULE			
COLUMN	BASE PLATE SIZE	ANCHOR RODS	REMARKS
HSS3x3x1/4 HSS4x4x1/4	9"x5/8"x0'-9"	(4)-3/4"Ø x 1'-4" LG HEADED	
HSS5x5x1/4 HSS6x6x1/4	12"x3/4"x1'-0"	(4)-3/4"Ø x 1'-4" LG HEADED	
HSS12x12x3/8	18"x1"x1'-6"	(4)-1"Ø x 1'-8" LG HEADED	
HSS12x6x3/16	18"x3/4"x0'-9"	(4)-1"Ø x 1'-4" LG HEADED	

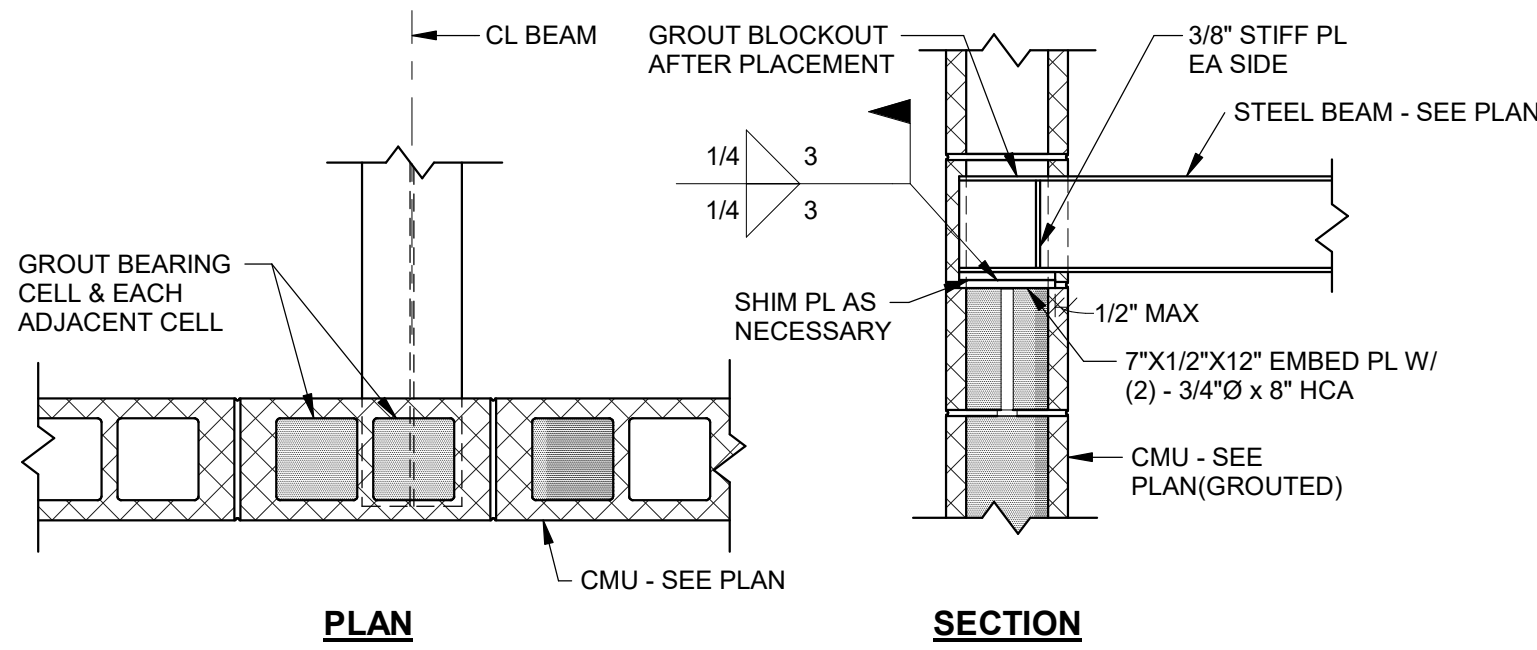
* ALL COLUMNS TO HAVE 4 ANCHOR RODS. ORIENTATION OF BASE PLATES MAY VARY AT CORNER LOCATIONS.
* EXTERIOR COLUMN BASE PLATES TO REMAIN CLEAR OF BRICK BEARING.
* WELD ANCHOR ROD PLATE WASHER TO BASE PLATE @ VERTICAL BRACING LOCATIONS.



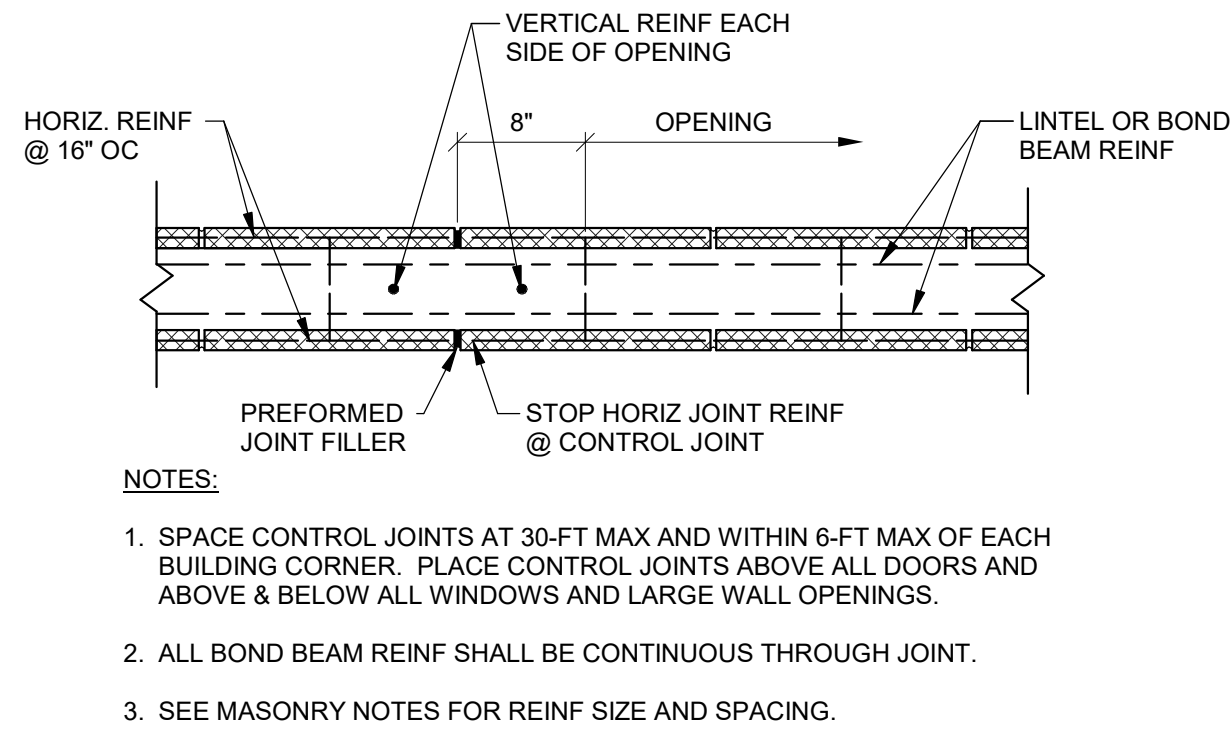
**ASTM F1554 GRADE 36
ANCHOR ROD DETAIL**



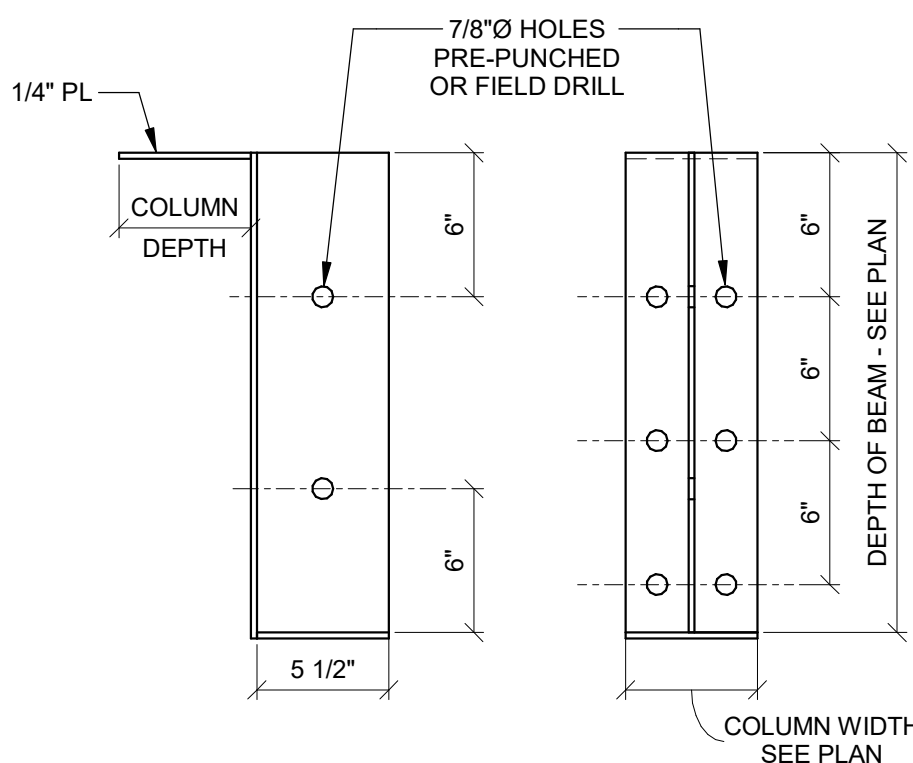
**VENEER + CMU
LINTEL DETAILS**



TYPICAL STEEL BM BEARING ON CMU

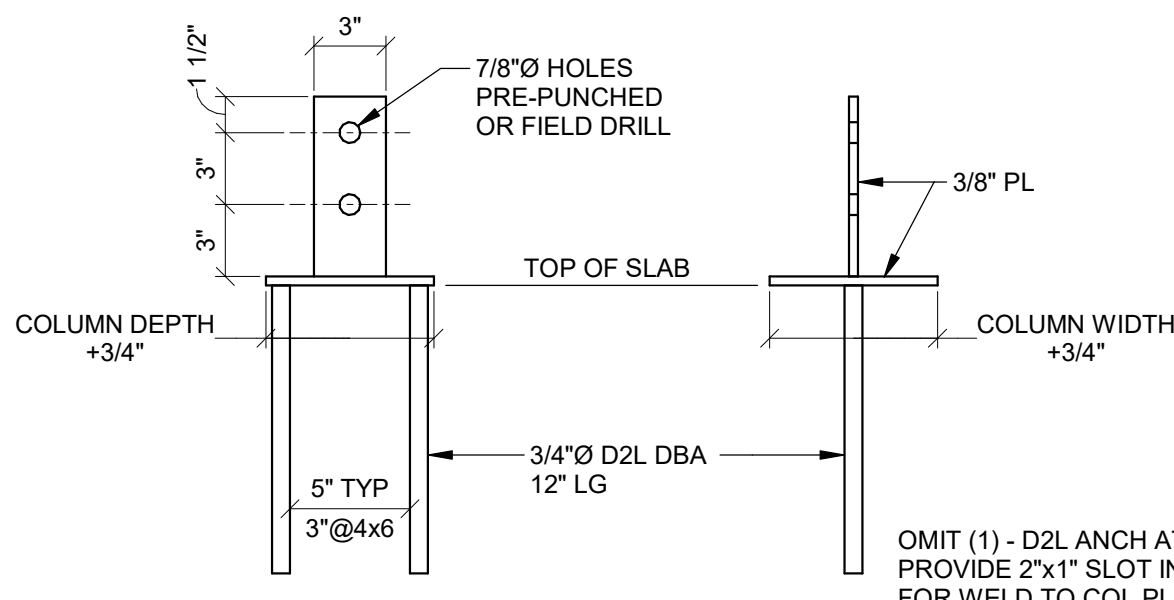


**TYPICAL CONTROL JOINT
@ DOORS & WINDOWS**



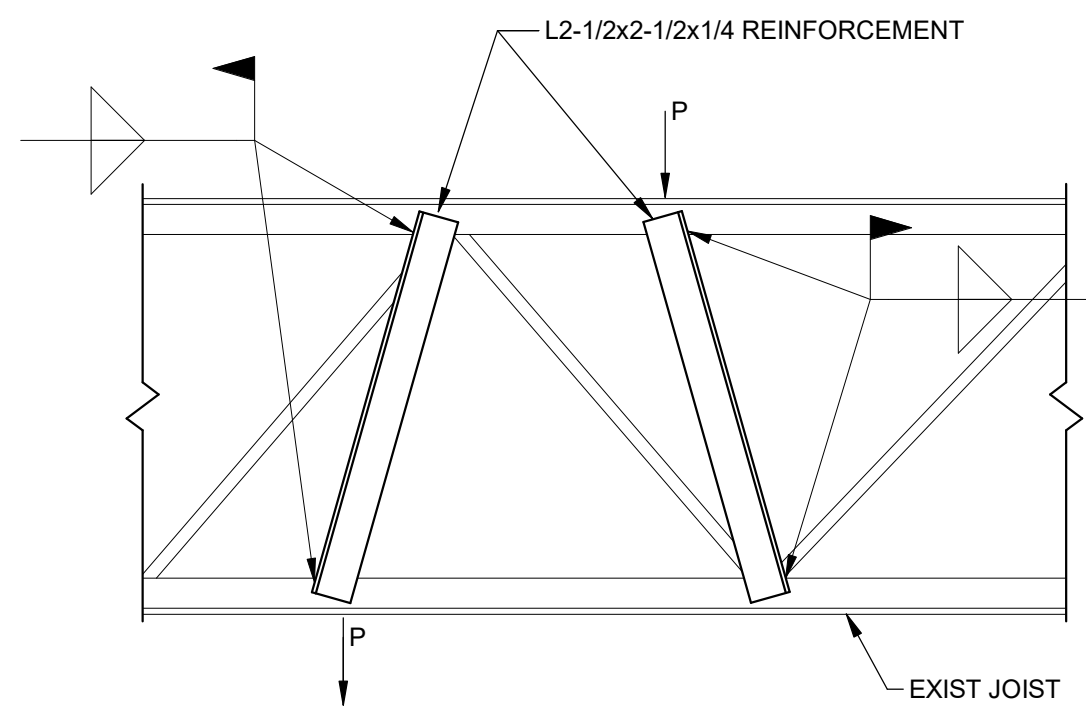
TYPICAL WOOD BEAM CONNECTION PL

• PAINT PL's & ANCH PER ARCH'L
• USE 3/4"Ø THREAD RODS THRU WOOD W/ 2"SQ PL WASHER EA FACE
• USE (6)-3/4"x6" LAG SCREWS INTO COLUMN ROUT END OF BEAM TO CONCEAL BOLTS

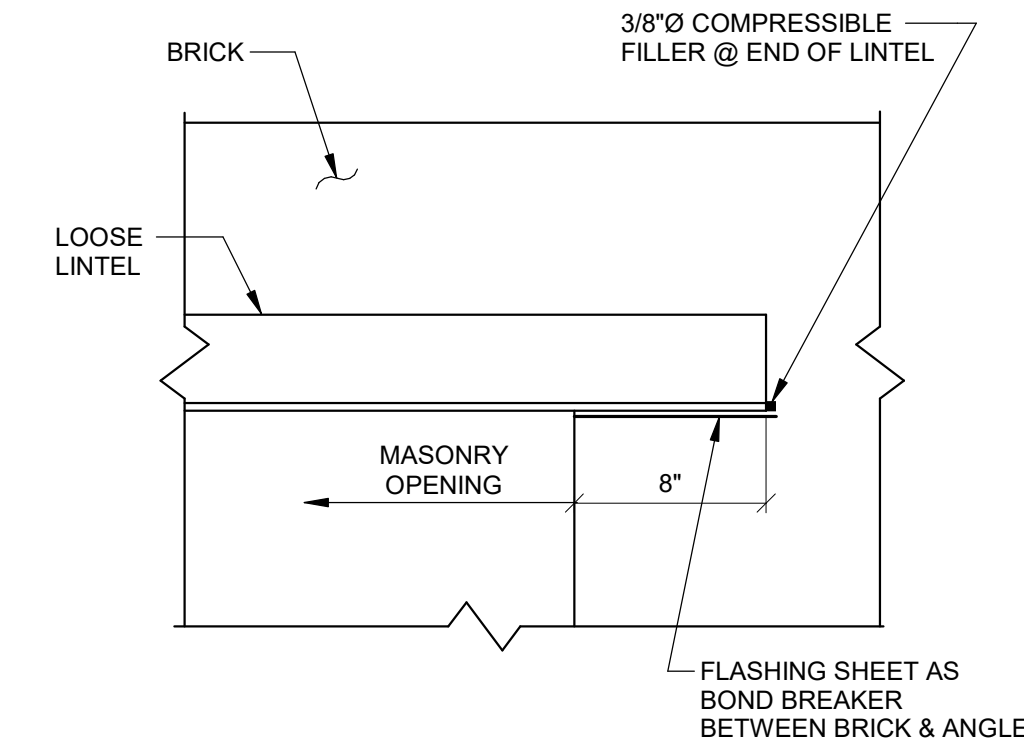


TYPICAL WOOD COLUMN BASE DETAIL

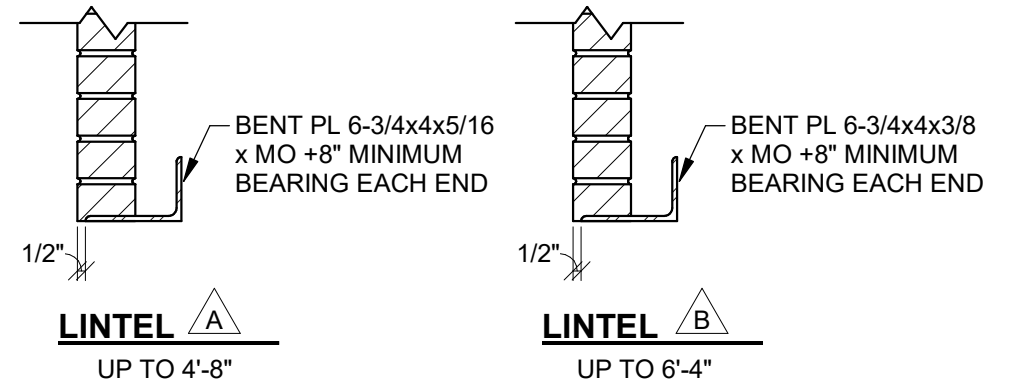
• EPOXY ANCH PL FLUSH TO SLAB
• PAINT PL's & ANCH PER ARCH'L
• USE 3/4"Ø THREAD RODS THRU WOOD W/ 2"SQ PL WASHER EA FACE



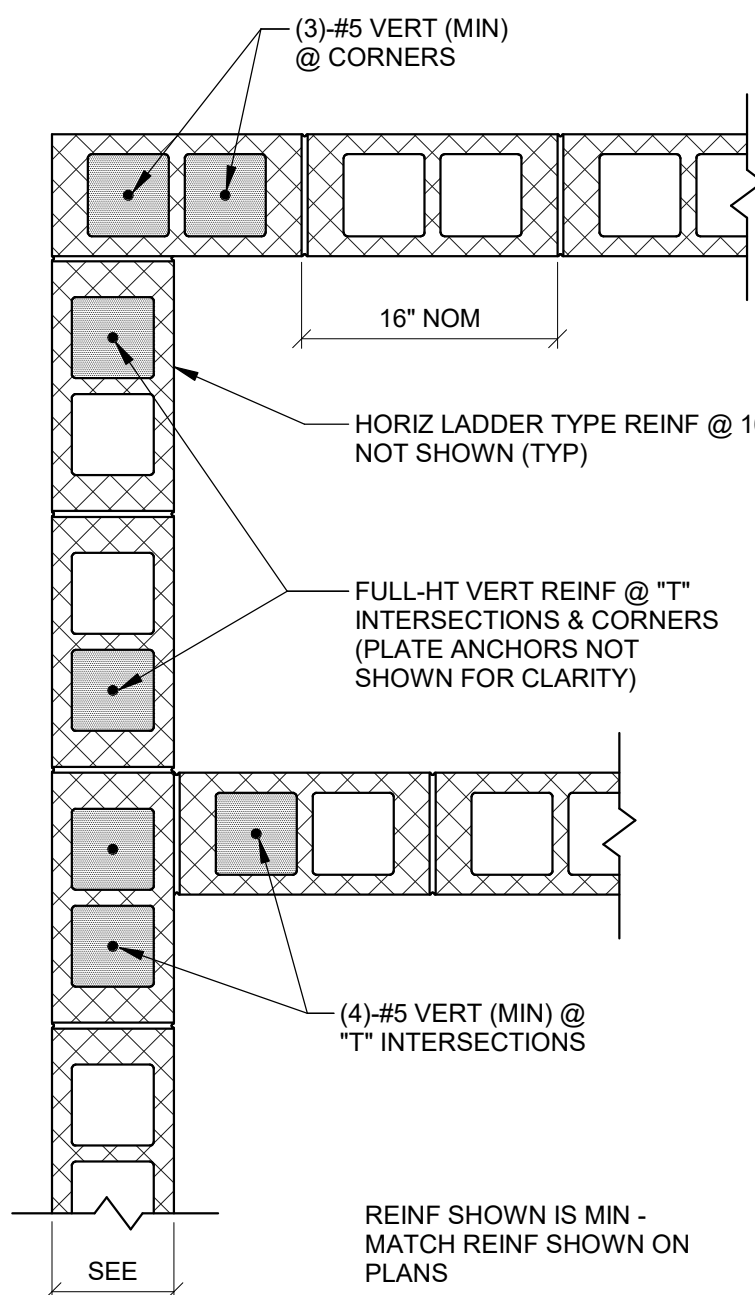
TYPICAL JOIST PANEL POINT ADDITION



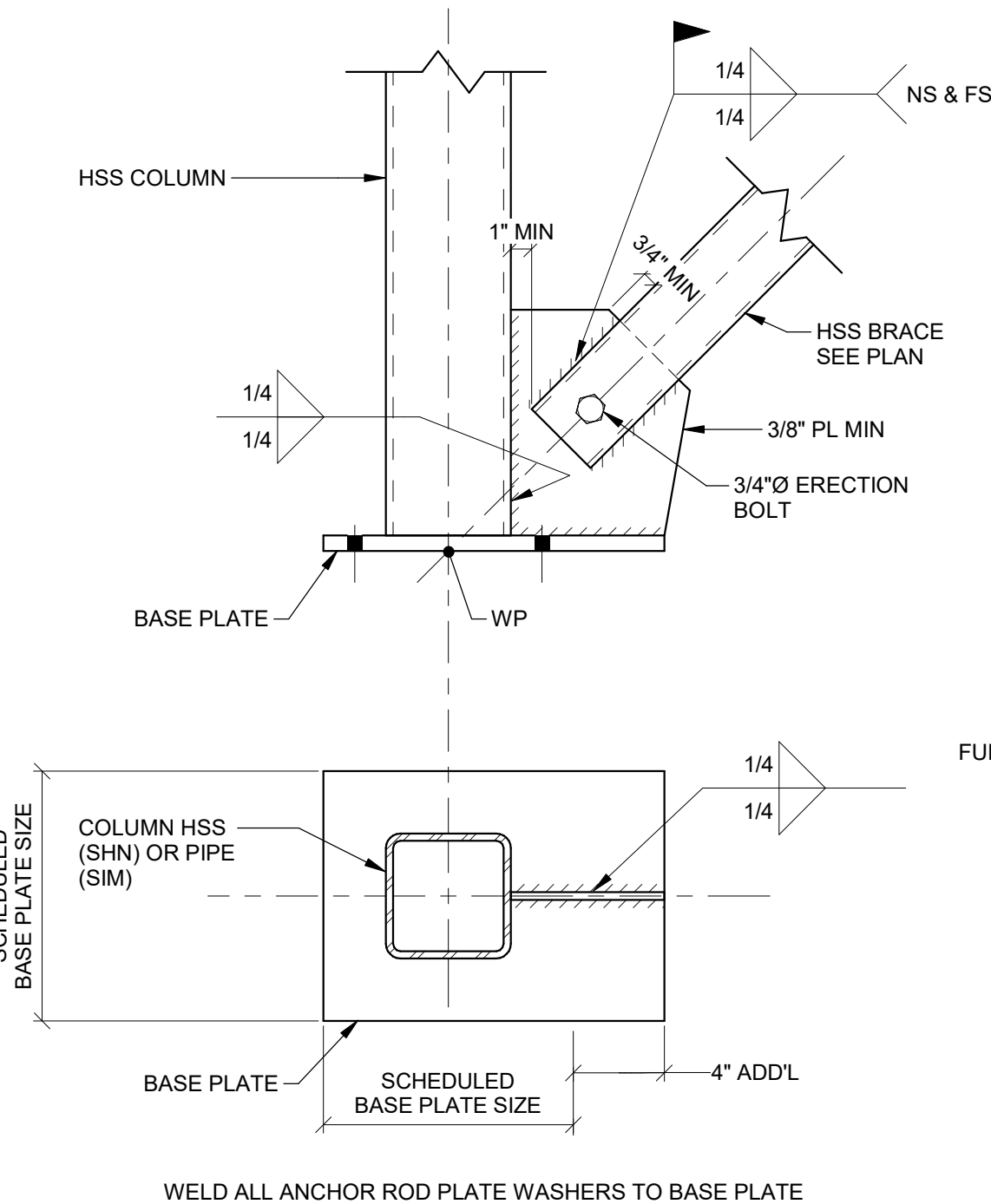
**TYPICAL LOOSE BRICK LINTEL
BEARING ELEVATION**



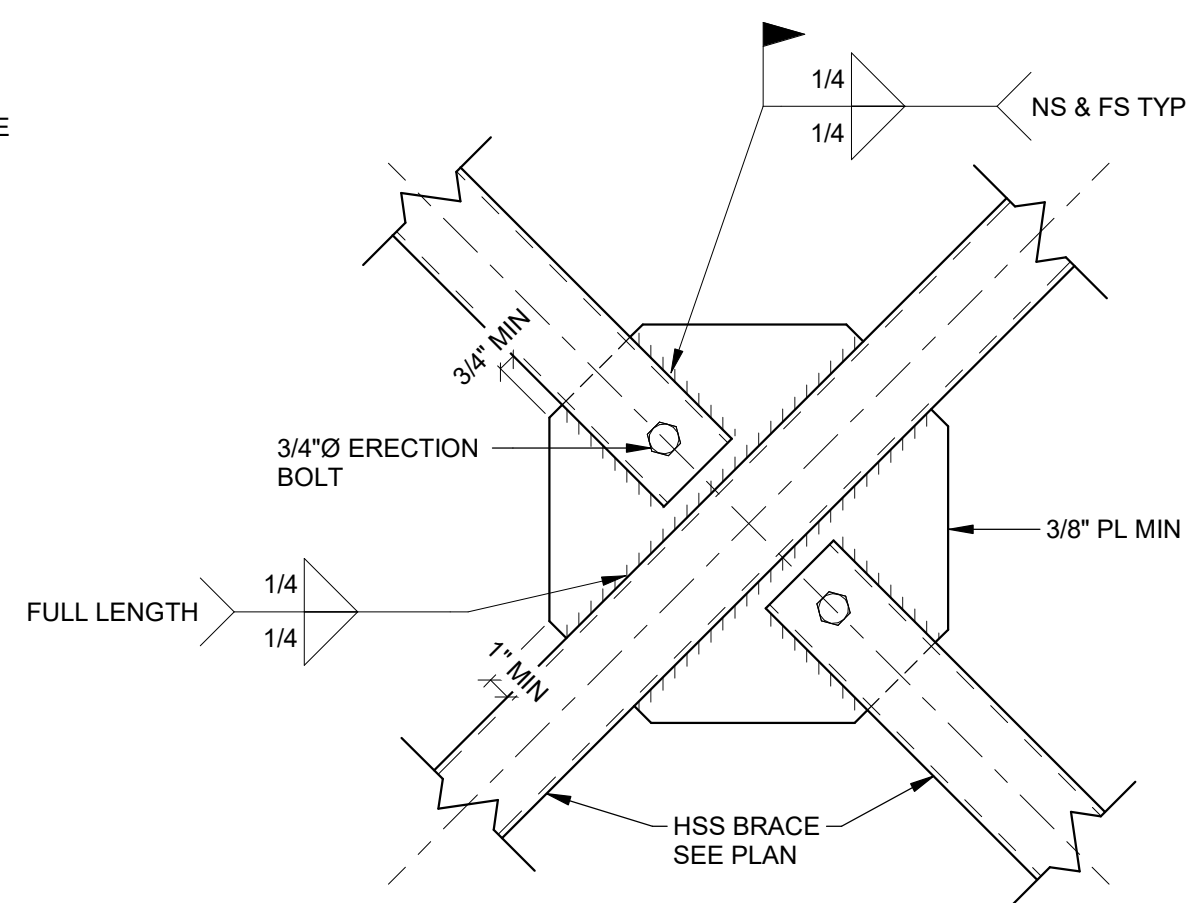
**LOOSE LINTEL DETAILS
@ METAL STUD WALLS**



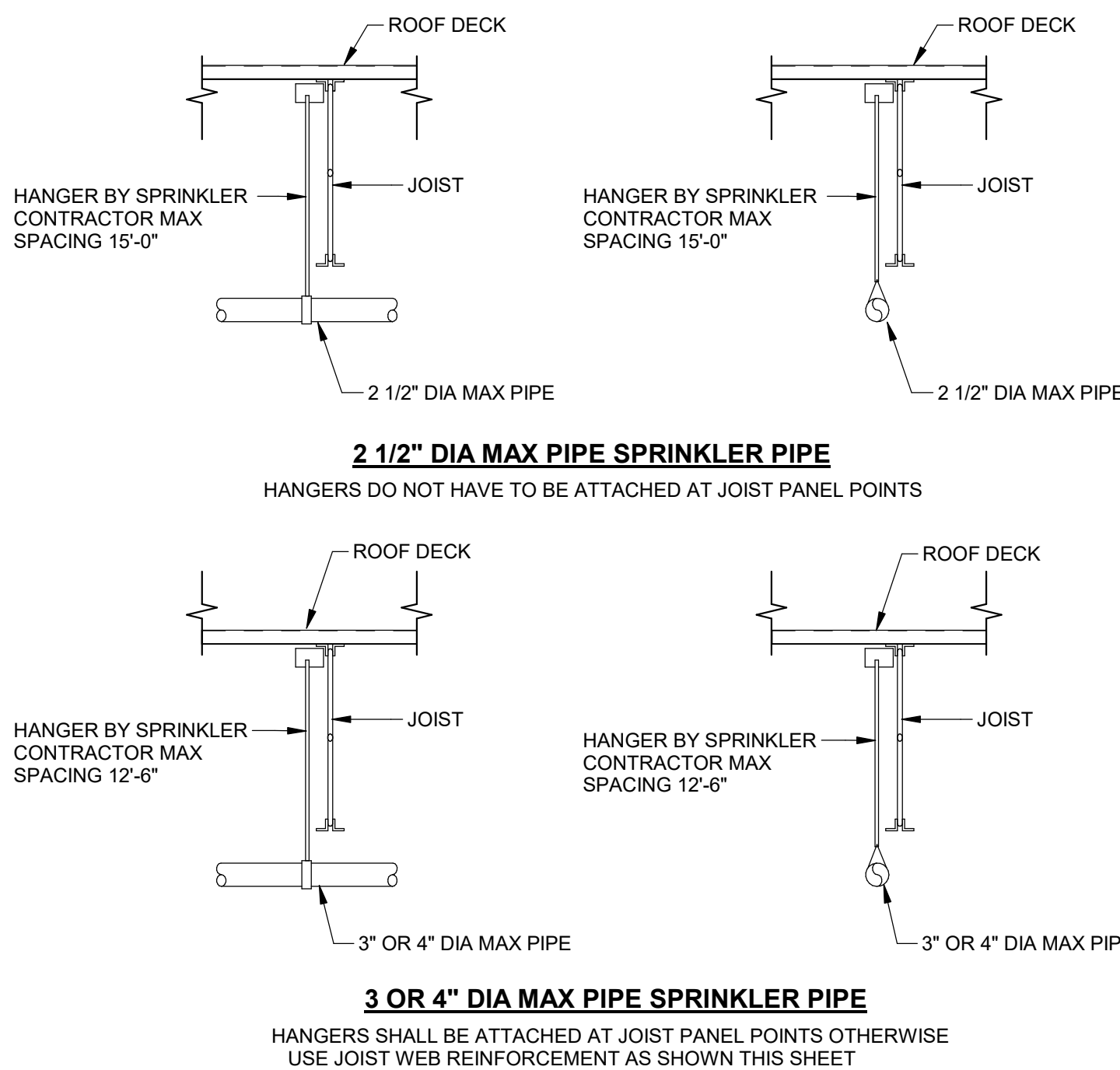
**TYPICAL MASONRY REINF AT
INTERSECTIONS AND CORNERS**



HSS BRACE TO HSS BASE



**HSS VERTICAL BRACE DETAIL
TIE PLATE**



TYPICAL SPRINKLER PIPE/JOIST REINFORCING DETAIL

TBA STUDIO
ARCHITECTURE
103 Cypress Street
West Monroe, LA 71291
Tel. 318.340.1550
Fax. 318.998.1315
www.tbastudio.com

TBA

SCHOOL OF CONSTRUCTION PRACTICE
LAB BUILDING, UNIVERSITY OF
LOUISIANA MONROE

507 Filhiol Ave., Monroe, LA 71203

DRAWING REVISIONS

No.	Description	Date

DRAWN BY: JDT

CHECKED BY: JDT

SHEET

S4.02

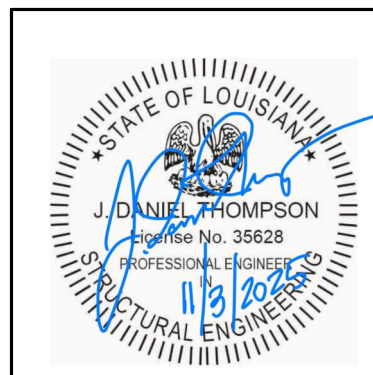
Date: NOV 2025

Project No.: 24-0059

File Name:

DESCRIPTION:

TYPICAL DETAILS



CONSULTING ENGINEERS
3003 KNIGHT STREET, SUITE 120
SHREVEPORT, LOUISIANA 71105
phone: 318-425-7452 fax: 318-425-4622
www.AFJMc.com

ENGINEER: J. DANIEL THOMPSON, PE, SE
LICENSE NO. 35628

THESE DRAWINGS DO NOT INCLUDE NECESSARY COMPONENTS FOR CONSTRUCTION SAFETY 25-033

COPYRIGHT NOTICE:
THIS ENGINEERING DRAWING SHALL BE USED ONLY PURSUANT TO THE AGREEMENT WITH AFJMC. NO OTHER USE, DISSEMINATION OR DUPLICATION MAY BE MADE WITHOUT PRIOR WRITTEN CONSENT OF AFJMC. ALL COMMON LAW RIGHTS OF COPYRIGHT AND OTHERWISE ARE HEREBY SPECIFICALLY RESERVED.